

McZeal Robotics



ALROBOTS.COM

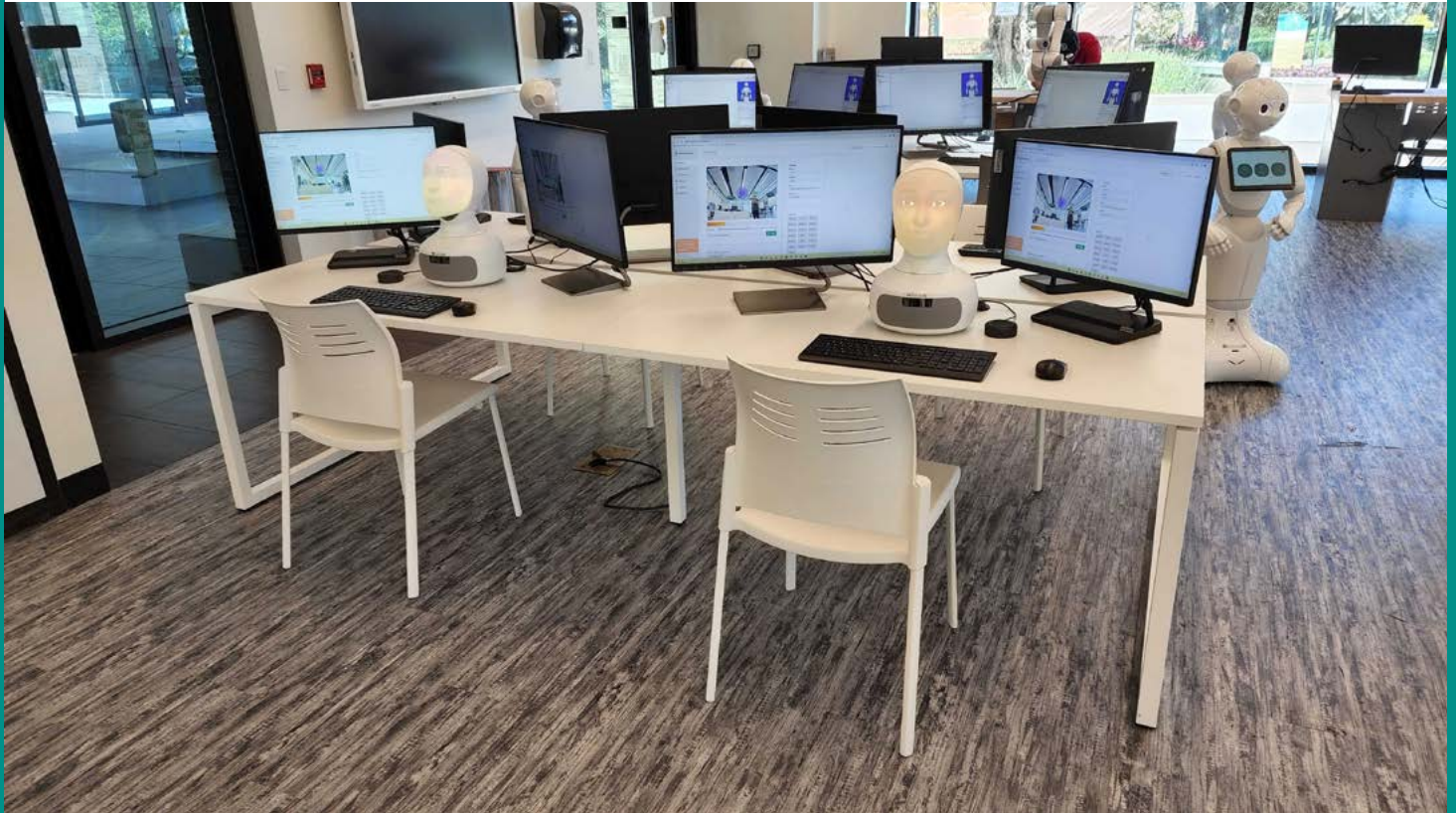


Higher-Education Robots  
By RobotLAB

# MASTERING

# AI

# 2023



HIGHER ED CATALOG





## WHY DO WE EXIST?

Because we genuinely care about giving students all over the world the tools and resources they need to make an impact in the world.



## HOW DOES ROBOTLAB WORK?

By partnering with educators and the most prestigious institutions, we lead the EdTech revolution globally. With hundreds of handpicked educational technology programs, we are the one-stop-shop for everything EdTech. Globally we have impacted the lives of thousands of schools, tens of thousands of educators, and millions of students.



## WHAT DOES ROBOTLAB OFFER?

Our products and services center around 3 main pillars. In terms of products, we offer the latest and greatest education technology on the market at the best price guaranteed. In terms of the integration of EdTech products into the classroom, our Engage EDU is an online platform that has various lesson plans for every subject,

every age group, and every robot. It is aligned with Common Core, NGSS, and TEKS onboarding, training, and updated refreshment courses, our customers, are always taken care of.



# MAIN INDEX

Welcome.....	1-2
Index.....	3
The AI LAB.....	4-7

## AI LAB STATIONS

Industry 4.0 station.....	8-9
Humanoid robotics station.....	10-11
Human robot interaction station.....	12-13
Aquatic robots station.....	14-15
Mobile cobots robotics station.....	16-17
Quadruped robots station.....	18-19

## PRODUCTS FOR THE AI LAB STATIONS

Pepper robot.....	22-23
NAO robot.....	24-27
Dobot robotic arm.....	28-29
KUKA robot.....	30-31
Niryo robotic arm.....	32-33
UBTECH robots.....	34-35
Misty robot.....	36-37
Furhat robot.....	38
Quadruped robots.....	39
Temi robot.....	40-41
Blueye X3 Underwater ROV.....	42-43
Agile X ground vehicles.....	44-45
Virtual reality for research.....	46
RobotLAB coding LAB.....	47
Special education.....	48-49
Makerspace.....	50-51





# THE AI LAB

The AI LAB by RobotLAB is the next generation of STEM Learning Centers. for their careers, college, and life-in-the-2030s.

**It converts generic STEM concepts to real-life experiences, which puts artificial intelligence at the center of learning.**

Developed by the students, the AI is used to control smart cars and drones, automate production lines, design human-robot interactions, and even take them to space exploration where robots must make decisions autonomously, without a hot-link to a human operator many millions of miles away.

**The AI LAB is designed to enable students to rotate between the AI Stations,** exposing them to multiple disciplines and various scenarios where artificial intelligence takes control of our lives.

This gives the students an unparalleled and rich experience to ensure that they are ready

It includes all instructional materials, apparatus, software, and equipment necessary to accommodate a class size of your choice. It's a complete system of integrated materials, furnishings, and curricula that provides a platform for the investigation of AI/STEM principles and practices through an integrated series of real-life context-based technological learning experiences using robots.





**Higher Ed AI LAB**  
 (Universities, Colleges, Trade schools, Technical schools)

**Mastering AI**  
 Artificial Intelligence in the real world

Designed to enable research and development of world-class, breakthrough, Artificial Intelligent applications

Every AI LAB is a complete turnkey system of integrated materials, software, online learning system, networking, and servers. To back up student projects. In Addition, the AI LAB includes cutting-edge equipment and all furnishings necessary to accommodate a group size of up to 30 students.

**What's included in the AI LAB?**

<b>Products:</b>	<b>Software:</b>	<b>Technology:</b>	<b>Furniture:</b>	<b>Optional:</b>
<ul style="list-style-type: none"> <li>-Station products- quantity is adjusted based on station and budget</li> <li>- Activity mats as required</li> </ul>	<ul style="list-style-type: none"> <li>-3 years of access to Engage K12 platform</li> <li>- Software associated with the robots</li> <li>- 1 year warranty- (includes online support)</li> </ul>	<ul style="list-style-type: none"> <li>-All-in-one computers</li> <li>-Keyboards</li> <li>-Mouse</li> <li>-Large monitor with wall mount</li> <li>-Wireless router</li> <li>-Printer</li> <li>-Power strips</li> <li>-USB chargers</li> </ul>	<ul style="list-style-type: none"> <li>-Student tables</li> <li>-Student chairs</li> <li>-Teacher table</li> <li>-Teacher chair</li> <li>-Storage cabinet</li> </ul>	<ul style="list-style-type: none"> <li>-Custom wall art</li> <li>-Product stickers for the storage cabinet</li> <li>-Pepper academic ambassador</li> <li>-VR advanced pack with mobile charging cart</li> </ul>







# CUSTOMIZE YOUR AI LAB

Choose the right configuration for you!

We understand that each project is unique and we will do our best to tailor your AI LAB's needs. Our Specialists can accommodate your situation based on available space, the number of students, and the budget.

We have done many different types of labs across the globe, both for learning as well as research and development.

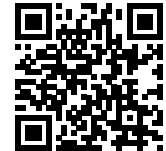


No matter where you are, we will come to you and provide a state of the art modular learning environment. Just tell us about your focus area and we will customize a solution based on more than a decade of expertise in the integration of robotic technology in education.

Over the next few pages you will see examples of some of our most popular stations, however, if there is an area of study that you would like included in your lab do not hesitate to ask about it and we will customize a solution for you.

Thank you for your interest in RobotLAB and we cannot wait to partner with you on your next project!

Please contact our AI LAB specialist at: [Sales@RobotLAB.com](mailto:Sales@RobotLAB.com) or +1-415-702-3033

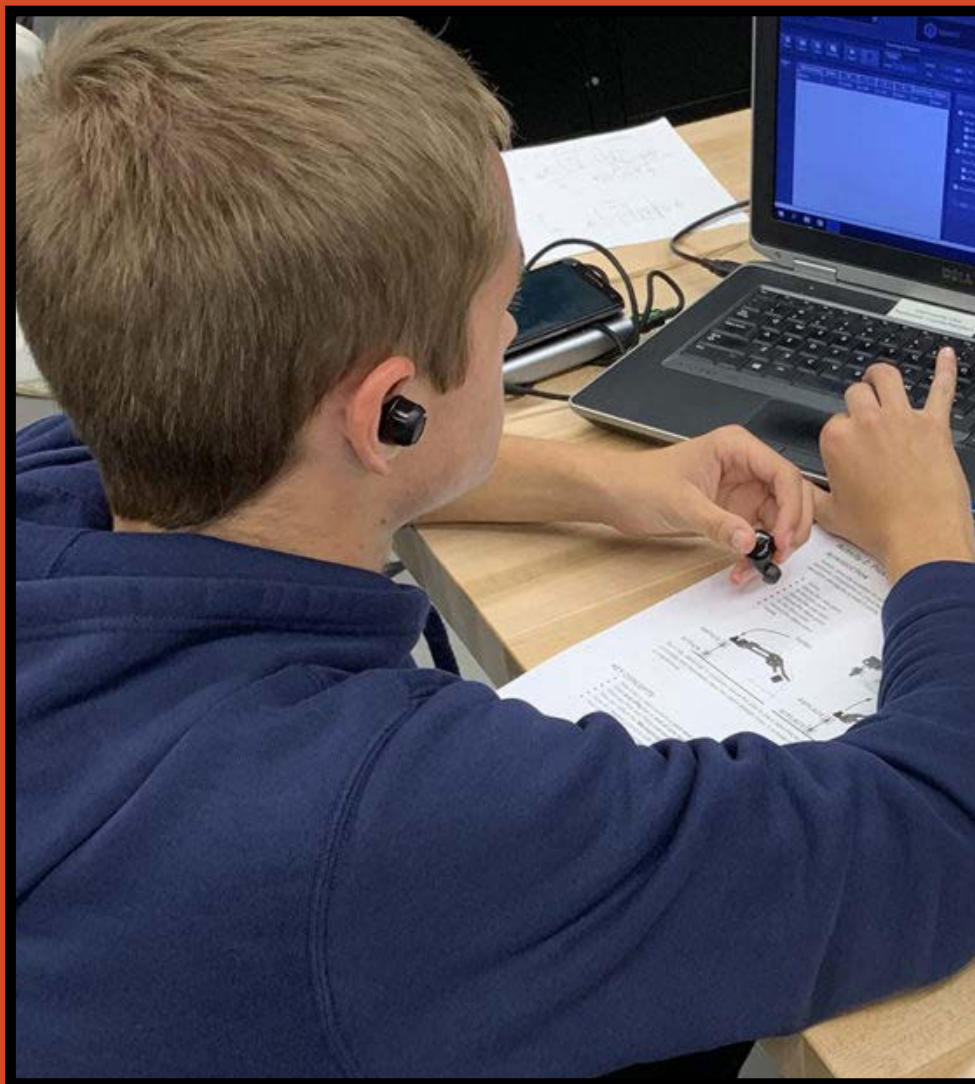




## INDUSTRY 4.0 STATION

Students will learn principles of how AI can assist with warehouse automation, sorting and stacking, visual sensing, assembly lines, process automation and optimization, data analysis and collaborative robotics, and more!

### AI LAB STATION



#### WHAT'S INCLUDED:

- Robot arms
- Sliding rails
- Conveyor belts
- Vision kits
- Software
- PLC's
- 1-year warranty
- RobotLAB support



This station can contain a combination of robotic arms, automation accessories like conveyors or sliding rails, vision KIT, different software options, PLC, and more! The goal of this station is to educate the students on how AI plays a role in the 4th industrial revolution and get a hands on experience through the variety of tools made available by RobotLAB.



## PRODUCTS FOR THE STATION



DOBOT MAGICIAN

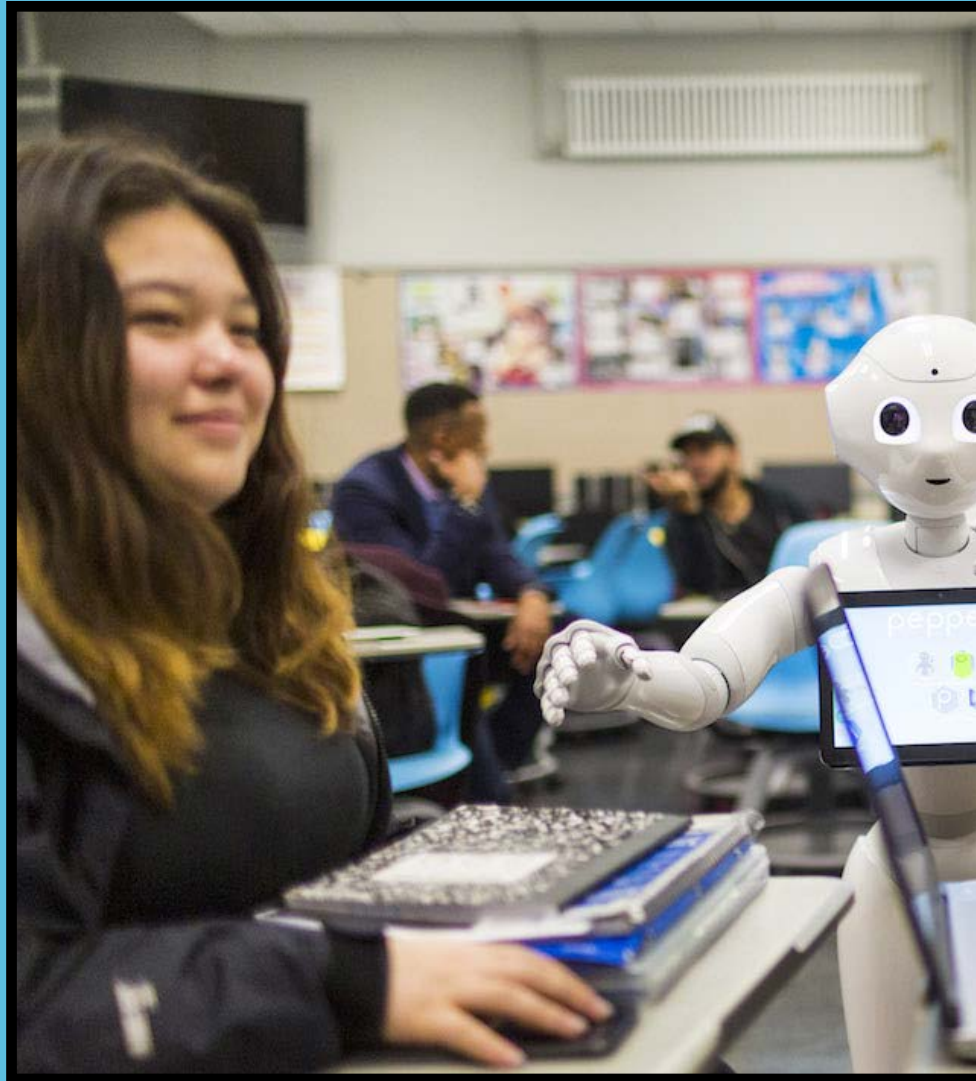
This Station will prep students for careers in manufacturing, process automation, security/surveillance, industrial data scientist, and more!



## HUMANOID ROBOTICS STATION

The Humanoid Robotics station will teach students principles of how AI can assist with multi-agent systems, learning transfer, task decomposition, reinforced learning, ad hoc autonomous agent teams, machine learning, robot vision, coding w/ python and other programming languages, chatbots, bipedal robotics, and more!

AI LAB STATION



Multi agent and humanoid robotics stations will prepare your students for careers in robotics, engineering, process automation, programming, and more!



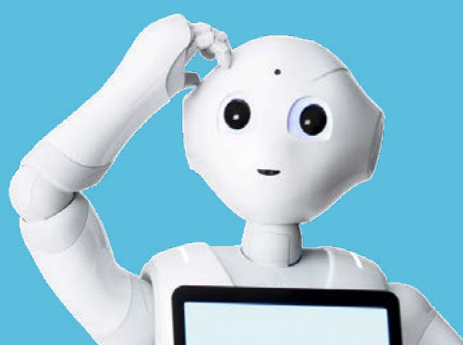
The goal of this station is to teach students how humanoids can come in different shapes and sizes as well as the advantages of each body shape (bipedal vs. on wheels for example). Furthermore it shows how to use these robots in a constructive way playing to the strengths that the robot's humanoid form brings.



**WHAT'S INCLUDED:**

- Humanoid robots
- Software
- Development support
- 1-year warranty
- RobotLAB support

**PRODUCTS FOR THE STATION**

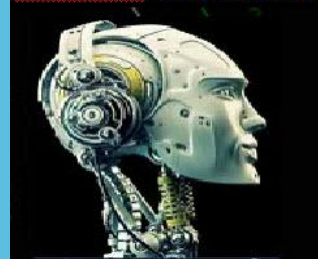


PEPPER ROBOT



NAO ROBOT

**McZeal Robotics**



# HUMAN ROBOT INTERACTION STATION

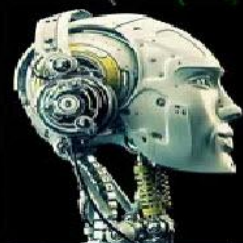
Teaches AI in the form of chatbots providing intro platforms like Google Dialog Flow, Amazon Alexa, Microsoft Cortana, and IBM Watson. It shows how chatbots can influence interaction when presented in different forms, such as interacting with Siri on your phone as opposed to interacting with a social robot like Furhat.

AI LAB STATION



The HRI station will prepare your students for careers in psychology, robot assisted therapy, research, human resources or business administration, chatbot architecture, and more!

**McZeal Robotics**







PRODUCTS FOR THE STATION

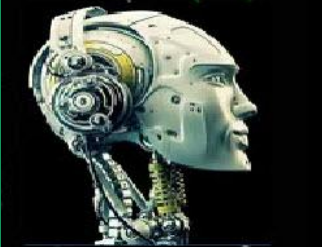


FURHAT ROBOT

WHAT'S INCLUDED:

- Humanoid robots
- AIO computers
- Development support
- Software
- 1-year warranty
- RobotLAB support

**McZeal Robotics**



## AQUATIC ROBOTS STATION

The underwater robotics station shows how AI can be implemented not only in your lab but beneath the surface as well. The underwater robotics station will teach computer vision, underwater navigation, localization, buoyancy, high stability, inertia, hull resistance, efficient propulsion, torque, collaborative robotics, and more!

AI LAB STATION



The underwater robotics station will prepare students to go into careers such as marine biology, logistics, search and rescue, research, aquaculture, water & energy, and more!

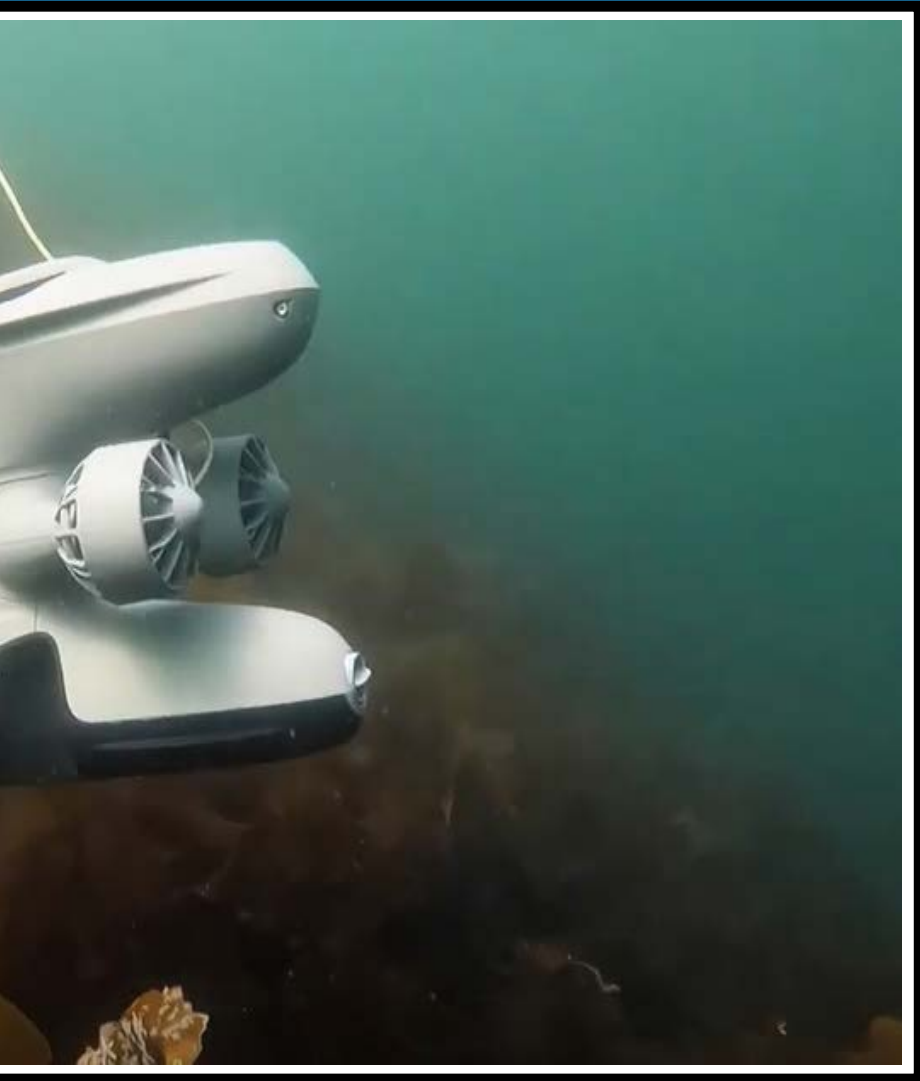
**McZeal Robotics**





**WHAT'S INCLUDED:**

- Aquatic robot
- Sensors
- Gripper
- Development support
- 1-year warranty
- RobotLAB support



**PRODUCTS FOR THE STATION**



Blueye X3 Underwater ROV

**McZeal Robotics**



# MOBILE COBOT ROBOTICS STATION

This station shows how AI can be implemented on mobile platforms. This station will cover robot vision, localization, inertia, torque, collaborative robotics, SMART farming, SMART warehouse, industrial robotics, rapid secondary development, SMART transportation, off road mobility, autonomous navigation, and limitless other possibilities.

AI LAB STATION



This station will prepare your students for careers in SMART warehouse, SMART farming, industrial automation, search and rescue, oil, power, and other manufacturing environments.



## PRODUCTS FOR THE STATION

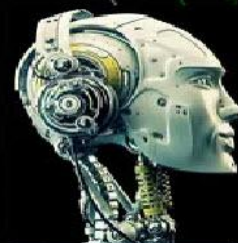


AGILE X VEHICLES

### WHAT'S INCLUDED:

- Your choice of autonomous mobile platform
- Sensors
- COBOT
- Choice of end-effectors
- Vision package
- Development support
- 1-year warranty
- RobotLAB support

**McZeal Robotics**





## QUADRUPED ROBOTICS STATION

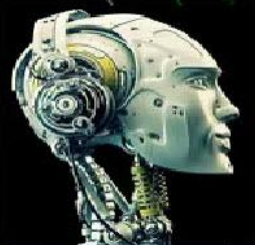
This station shows how AI can be implemented on mobile platforms.

This station will cover robot vision, localization, inertia, torque, collaborative robotics, SMART farming, industrial robotics, rapid secondary development, SMART transportation, off road mobility, autonomous navigation, what are the advantages of quadrupeds and other possibilities.



This station will prepare your students for careers in search and rescue, manufacturing, robotics, engineering, science, construction, logistics, and more!

**McZeal Robotics**





## PRODUCTS FOR THE STATION

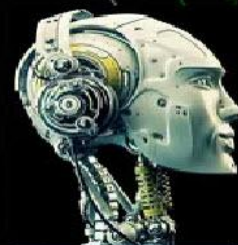


## QUADRUPED ROBOTS

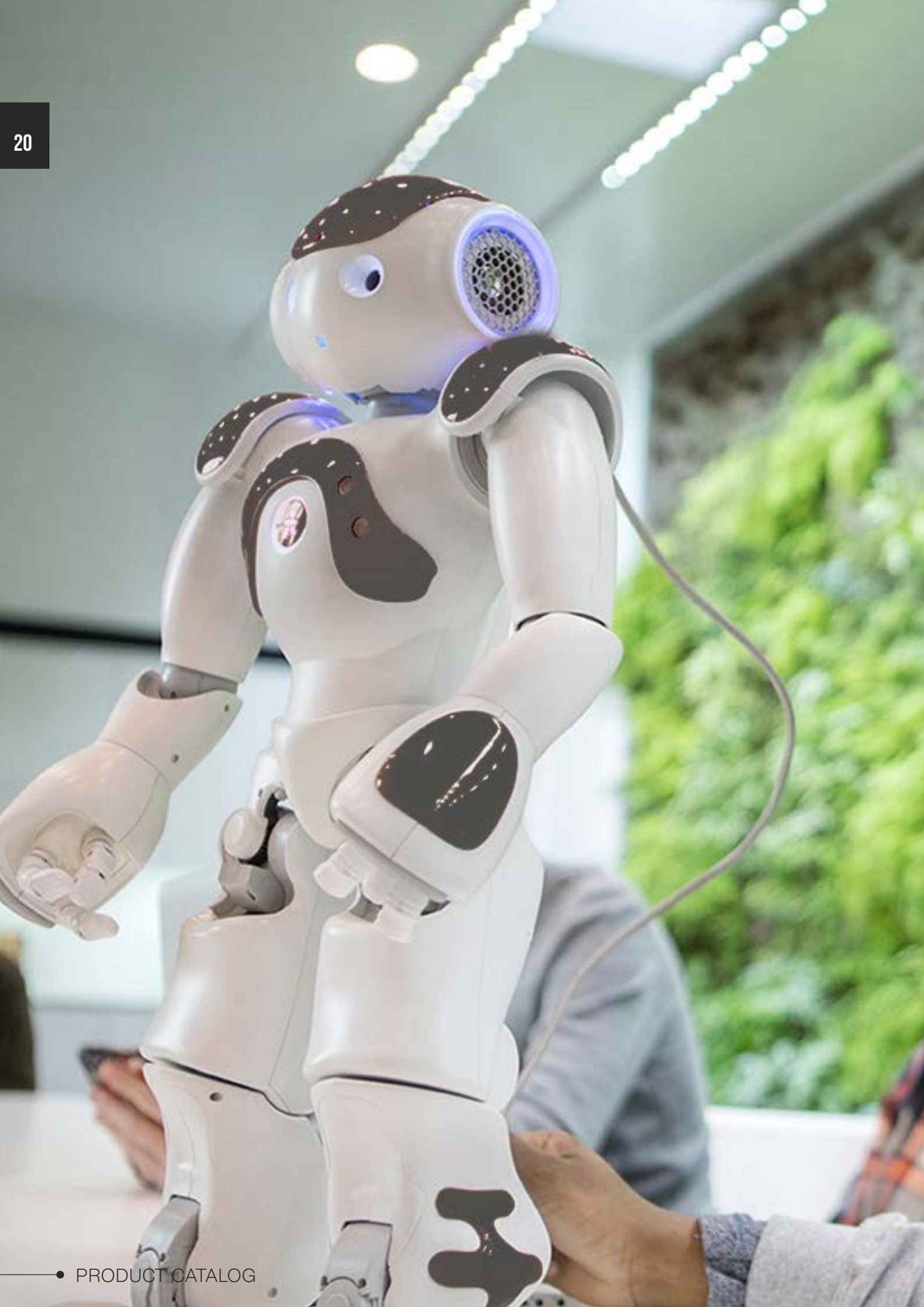
### WHAT'S INCLUDED:

- Your choice of quadruped robot
- Sensors
- COBOT
- Choice of end-effectors
- Software
- Development support
- 1-year warranty
- RobotLAB support

**McZeal Robotics**









**AVAILABLE PRODUCTS FOR THE AI LAB**



## PEPPER ROBOT

Pepper, the most deployed humanoid outside of the classroom, is here and ready to take your program to the next level. Pepper comes with full access to the SDK so that you can customize the 4ft tall humanoid to fit your needs. Pepper is being used today in healthcare, retail, banking, hospitality, and more!

Schedule a consultation with your  
RobotLAB expert today!  
Contact [Sales@RobotLAB.com](mailto:Sales@RobotLAB.com)

Main Features: Fully-programmable humanoid robot for students ages 7 and up  
Sensors: HD Cameras, tactile sensors, position sensors, microphones, and force sensitive resistors.

Programming Languages: Drag/Drop C++, Python, and Java

Mobile/Stationary: Mobile robot that is more connected than ever with Bluetooth and a faster and efficient Wi-Fi

Training: Comes with a Free online one-hour on-boarding session

Warranty: 1-year warranty

**McZeal Robotics**







PEPPER ROBOT  
PREMIUM



PEPPER ROBOT  
PREMIUM+ NAV VERSION



PEPPER ROBOT ACADEMIC  
AMBASSADOR

## ROBOT MANAGEMENT SYSTEM SOFTWARE (BASE PACKAGE)

(ADD SKILLS)



- ROBOTLAB SKILLS - PRESENTATION
- ROBOTLAB SKILLS - FAQ
- ROBOTLAB SKILLS -CONVERSATIONAL MODE
- ROBOTLAB SKILLS - ENTERTAINMENT
- ROBOTLAB SKILLS -RECEPTIONIST
- ROBOTLAB SKILLS -LEAD GENERATION
- ROBOTLAB SKILLS -TOUR GUIDE\*
- ROBOTLAB SKILLS -PERSONALIZED INTERACTION \*
- ROBOTLAB SKILLS -REMOTE CONTROL
- ROBOTLAB SKILLS -VIDEO CALLS
- -ROBOTLAB SKILLS-ANALYTICS
- ROBOTLAB SKILLS -FLEET MANAGEMENT

**+ ONLY AVAILABLE WITH PEPPER PREMIUM + NAV VERSION**



TRANSPORT  
CASE



EXTRA YEAR  
OF WARRANTY



CUSTOM  
DESIGN STUDIO



ONLINE  
TRAINING



CHARGING  
STATION





McZeal Robotics



## NAO ROBOT

NAO is a fully programmable bipedal humanoid robot. NAO is the most recognizable of any humanoid robots in education. The reason? To put it quite simply, its highly versatile. From use cases in Autism therapy to dancing in a synchronized dance show to STEM ambassador and beyond, NAO is sure to fit the needs of just about any research study out there.

Main Features: Fully-programmable humanoid robot

Sensors: 2-5 MP cameras, dual stream of the top and bottom cameras, tactile sensors, position sensors, 4 omni-directional microphones, 8 force sensitive resistors.

Programming Languages: Drag/Drop C++, Python, and Java

Mobile/Stationary: Mobile robot that is more connected than ever with Bluetooth and faster and efficient Wi-Fi

Training: Comes with a Free online one-hour on-boarding session

Warranty: 2-year warranty



### NAO POWER V6 AI EDITION

- One NAO V6 (Copper or Rose Gold)
- 1 Charger and 1 Battery
- Unlimited Choregraphe Licenses
- 3-year Access to AI Skills
- Software License for 3D Simulator Tool
- Full SDK and API
- RobotLAB Support

————● Please contact us for pricing



### NAO POWER V6 STANDARD EDITION

- One NAO Power V6 (Dark Grey)
- 1 Charger and 1 Battery
- 1 year of warranty
- Unlimited Choregraphe Licenses
- User Manual
- Full SDK and API
- RobotLAB Support

————● Please contact us for pricing



### NAO STARTER PACK

- 1 NAO V6 Humanoid Robot (Dark grey)
- 1 Charger and 1 Battery
- 1 Docking Station
- 1 Teacher Laptop with pre-installed Software and 1 Router
- 1 Transport Case
- Unlimited Choregraphe Software Licenses and Full SDK
- STEMLAB Software User license for 1 year
- Onboarding and Orientation session
- 1-year Warranty & RobotLAB Support

————● Please contact us for pricing



### NAO STARTER PACK DUO

- 2 NAO V6 Humanoid Robots (Dark grey)
- 2 Chargers and 2 Batteries
- 2 Docking Stations
- 1 Teacher Laptop with pre-installed Software and 1 Router
- 2 Transport Cases
- Unlimited Choregraphe Software Licenses and Full SDK
- 2 STEMLAB Software User licenses for 1 year
- Onboarding and Orientation session
- 1-year Warranty & RobotLAB Support



### NAO CLASSROOM PACK

- 3 NAO V6 Humanoid Robots (Dark grey)
- 3 Chargers and 3 Batteries
- 3 Docking Stations
- 1 Teacher Laptop with pre-installed Software and 1 Router
- 3 Transport Cases
- Unlimited Choregraphe Software Licenses and Full SDK
- 3 STEMLAB Software User licenses for 1 year
- Onboarding and Orientation session
- 1-year Warranty & RobotLAB Support




### NAO LAB PACK

- 5 NAO V6 Humanoid Robots (Dark grey)
- 5 Chargers and 5 Batteries
- 5 additional Batteries
- 5 Docking Stations
- 1 Teacher Laptop with pre-installed Software and 1 Router
- 5 Transport Cases
- 20 NAO Robot Shirts
- Unlimited Choregraphe Software Licenses and Full SDK
- STEMLAB Software Site license for 1 year
- Onboarding and Orientation session



# ACCESORIES



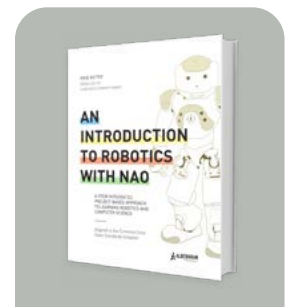
EXTRA YEAR OF WARRANTY



NAO ADDITIONAL LANGUAGE




NAO V6 UPGRADE



EDUCATIONAL TEXTBOOK



PROGRAMMING SOFTWARE



LANGUAGE SOFTWARE



LEARNING SOFTWARE



DOCKING STATION




TRANSPORT CASE



3-HOUR ONLINE TRAINING

ONLINE TRAINING



CUSTOMIZED GREETING



NAO CHARGER



NAO BATTERY

● Please contact us for pricing



## DOBOT ROBOTIC ARM



A high precision 4-axis robotic arm capable of grabbing, writing, drawing and 3D printing. The visual programming interface makes it easy to program it using drag and drop command functions. Dobot Magician V3 is a truly cutting-edge robotic arm made available for your STEAM or CTE program. It's a highly cost effective solution empowering 21st century skills and unleashes students' creativity.

● Please contact us for pricing



Main Features: All-in-one Robotic Arm for STEM

Programming Language: Drag & Drop , C++, Python and Java.

Mobile/ Stationary: Stationary Robot

Training: Available as an option

Warranty: 1-year warranty



DOBOT MAGICIAN

DOBOT MAGICIAN RO-  
BOTIC EDU EDITIONDOBOT STARTER  
PACKDOBOT  
CLASSROOM PACKDOBOT MAGICIAN  
PRODOBOT ADVANCED  
PACKINDUSTRY 4.0 RO-  
BOTIC LAB

—● Please contact us for pricing

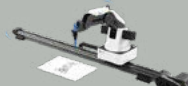
## ACCESSORIES



VISION KIT



CONVEYOR BELT



SLIDING RAIL

SAFETY  
GLASSES3-HOUR ONLINE TRAINING  
ONLINE  
TRAINING





## KUKA ROBOT STATION

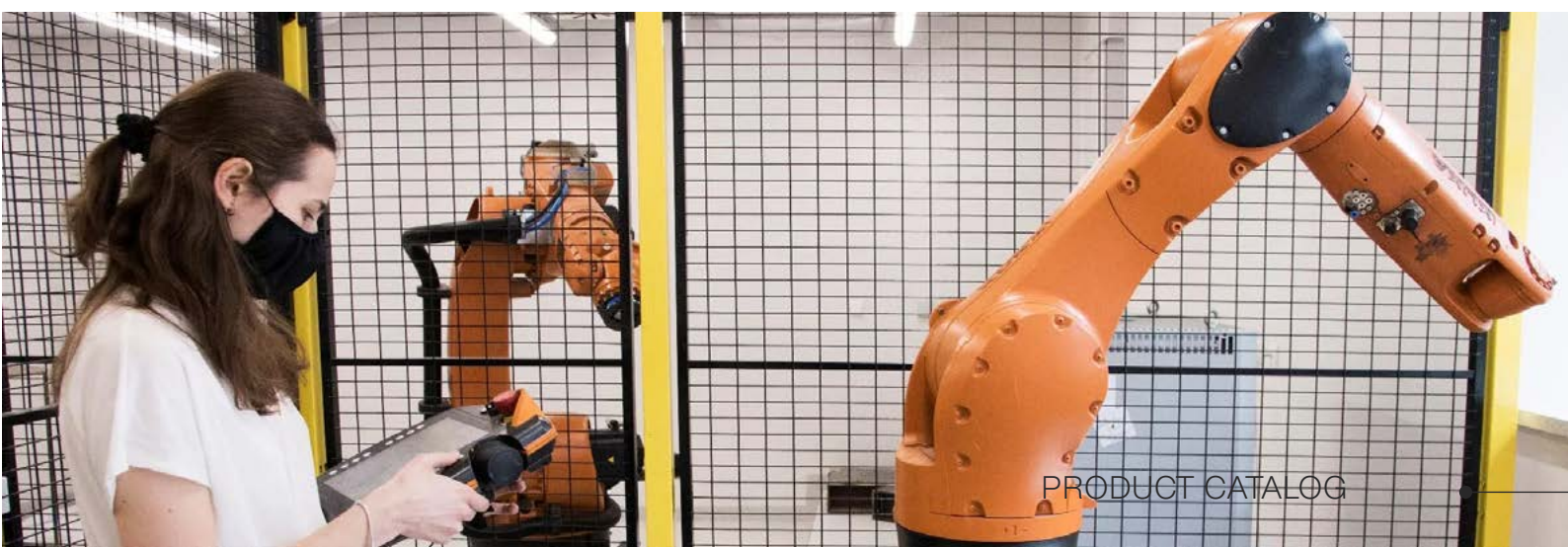
The KUKA Ready2\_Educate station is an all-in-one solution designed to teach the basics of robot technology and automation. It includes the KUKA KR4 Agilus robot arm with the latest KR C5 micro controller and smartPAD teach pendant. It is preconfigured for educational applications, and a curriculum is also available.

● Please contact us for pricing



## BENEFITS OF THE PLATFORM

- Flexibility: Versatile training application tailored to the KR4 AGILUS as well as a second application surface for individual tasks.
- User-friendly: Preconfigured and ready-to-use, including code examples and lesson plans.
- Comprehensive Package: Includes gripper, cubes set, pen, paper holding frame and “hot wire” practice set.
- Space-saving: Clever design that can fit in any training room.







## NIRYO ROBOTIC ARM

Niryo wants to make robotics accessible to everyone. It all began with the Niryo One, the first 6-axis collaborative robot for Education & Research, powered by Arduino, Raspberry Pi, and ROS. Ned, its successor, is an improved version with an aluminum structure that increases its robustness, its precision & repeatability (0.5mm). Niryo also provides a next-gen solution for industry based on robotics, vision and Ed.

Main Features: A programmable kit for students K-12

Programming language: Niryo

Mobile/ Stationary: Stationary Robot

Training: Available as an option

Warranty: 1-year warranty



NIRYO NED 2



NIRYO NED

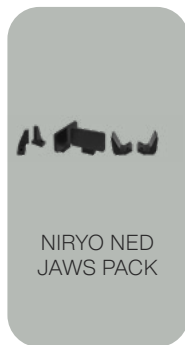
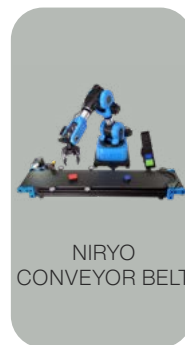
● Please contact us for pricing







## ACCESORIES



—● Please contact us for pricing



## UBTECH ROBOTS

Main Features: Fully-programmable humanoid robot for developers and researchers  
Programming language: Java (Android), ROS  
Mobile/ Stationary: Mobile robot  
Training: Available as an option  
Warranty: 1-year warranty

● Please contact us for pricing



CRUZR ROBOT  
ACADEMIC EDITION

Bring AI to life with Cruzr Robot, hands-on research & learning platform for machine learning, human robot interaction and navigation (SLAM).

You will be amazed by the flexibility and fluidity of Cruzr's movements! With 17 degrees of freedom, Cruzr moves like a human. Cruzr has flexible arms and can provide users with rich body language. With its four-layer protection system, Cruzr is capable of shaking hands, greeting visitors, moving around, dancing and hugging. His 3 abrasion resistant and quiet omni-directional wheels enable him to move around smoothly through 360°, at a maximum speed of 1 m/s.





Main Features: Fully-programmable humanoid robot for developers and researchers

Best For: Universities and Research Labs

Mobile/ Stationary: Bi-pedal mobile robot

Training: Available as an option

Warranty: 1-year warranty

Walker X is the latest version of our groundbreaking bipedal humanoid robot. Walker X has significant improvements in physical performance, autonomous intelligence, and human to robot interactions.

Equipped with both hardware and artificial intelligence upgrades combined with the updated ability to adapt to complex environments, Walker X is more advanced than ever.



WALKER HUMANOID  
SERVICE ROBOT

● Please contact us for pricing







## MISTY ROBOT



MISTY ROBOT  
STANDARD



MISTY ROBOT  
ADVANCED



Bring AI to life with Misty, the autonomous roaming robot your students can program to move around and interact with humans. Misty has an open-source platform and open hardware that is designed to delight robotics enthusiasts and institutions while providing access to a high-tech tool.







Main Features: Fully-programmable robot for education

Best For: High school, library, & summer camp

Mobile/Stationary: Mobile robot

Training: No training required- available as an option

Warranty: 1-year warranty

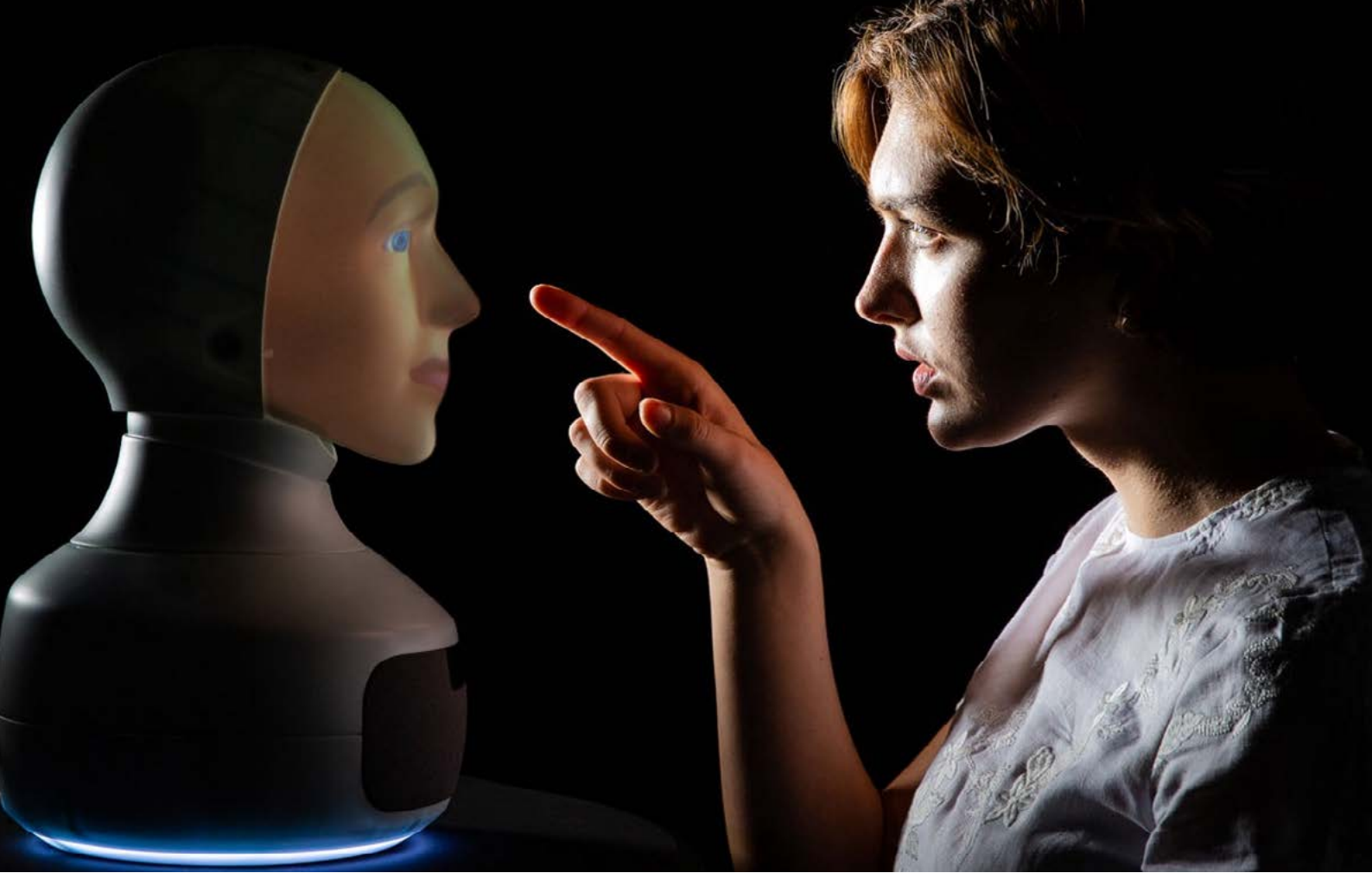
● Please contact us for pricing

## ACCESSORIES



MISTY  
BACKPACK FOR  
ARDUINO





# FURHAT ROBOT

Furhat is a social robot that communicates with us humans as we do with each other - by speaking, listening, showing emotions and maintaining eye contact. This advanced research platform is used for Artificial Intelligence (AI), human robot interaction (HRI), cognition and healthcare.



- FURHAT ROBOT BASIC
- FURHAT ROBOT STANDARD
- FURHAT ROBOT PREMIUM

## ACCESSORIES



DOG MASK



ANIME MASK



CHILD MASK

Main Features: Fully-programmable social robot  
Mobile/Stationary: Stationary robot  
Training: No training required- available as an option  
Warranty: 1-year warranty

• Please contact us for pricing







## QUADRUPED ROBOTS

A nimble robot that climbs stairs and traverses rough terrain with unprecedented ease, yet is small enough to use indoors. Built to be a rugged and customizable platform, Axel comes ready to operate, right out of the box. With flexible API tools for navigation and autonomy and an open payload interface, Axel can be a research tool for a variety of applications.

Main Features: Mobile robot for research

Mobile/Stationary: Mobile robot

Training: No training required-available as an option

Warranty: 1-year warranty

● Please contact us for pricing



UNITREE ALIENGO



UNITREE B1





## TEMI ROBOT

Bringing the rich learning environment of a classroom to a homebound or hospitalized student can be very difficult. The Double Robot enables the remote student to join the classroom in real-time, interact with other students one-on-one, and participate in group discussions.

**Main Features:** Mobile and programmable robot

**Mobile/Stationary:** Mobile

**Training:** Comes with a free online-one-hour onboarding session.

**Warranty:** 1-year warranty

—● Please contact us for pricing





## TEMI GO PLATFORM

The perfect solution for food, drinks and open tray running.

Deliver food, drinks or anything you wish in restaurants, food courts, offices, retail and more. An autonomous point to point delivery system, will take the items from point A to B flawlessly and continue to the next task. Fully controlled by on screen commands, voice and Temi center platform.

Temi GO is equipped with an advanced suspension system that reduces vibrations on the trays, to make sure all deliveries reach their destination in the safest way!

—● Please contact us for pricing







## BLUEYE X3 UNDERWATER ROBOT

Main Features: Mobile robot for research

Mobile/Stationary: Mobile robot

Onboarding: Required (1 hour online training)

Warranty: 1-year warranty



—● Please contact us for pricing

71% of the world is covered by water. Explore new frontiers with the X3 from Blueeye Robotics. The ROV provides you with endless possibilities. 3 Guest Ports enable the integration of different external equipment. The BlueeyeX3 ROV can be equipped with a variety of sensors, manipulators, sonars, and positioning systems.

RobotLAB offers equipment from a wide range of suppliers, and other necessary ROV parts such as tethers come in different lengths. As inspections of underwater operations demand different setups, we encourage you to get in touch with us to help you with a customized package that suits your needs.!



- The size of the X3 makes it easy to get closer to the species or object you want to inspect - even in narrow places
- Allows you to stay in a fixed position or move slowly with full control
- Side-ways propeller lets you move side-ways while filming in a steady direction
- Lightweight and easy to carry with you to remote areas
- Lets you have a spectator or co-pilot
- Action camera attachment points (GoPro standard) let you bring add-ons i.e. for water sampling
- Powerful LED lights
- Silent propellers and full control make sure not to disturb the fish or cause any damage
- True-color camera
- Battery life of 2 hours + replaceable battery package





## AGILEX GROUND VEHICLES

AgileX Robotics has developed a full line-up of industry-leading robotics chassis that fully meet all industry requirements, including general unmanned ground vehicle (UGV), indoor global automated vehicle (AGV), and tracked chassis. Back by mature software capabilities.

Main Features: Mobile robot for students 12 and up

Sensors: Distance sensors, sound sensors, proximity sensors, beacon sensors, and accelerometers.

Training: Mobile robot

Warranty: 1-year warranty

AgileX Robotics also provides customized autonomous robot solutions comprising of robot R&D kits, mobile manipulators, Cobots, Autopilot Kits and more, to enable industrial and education use cases to easily and quickly develop and deploy their AI robot project in all industries fields.

—● Please contact us for pricing







BUNKER PRO



HUNTER SE



LIMO



BUNKER



SCOUT 2.0



HUNTER 2.0



SCOUT MINI



TRACER



BUNKER MINI

## ACCESSORIES



RANGER MINI



AGILE X RESEARCH & DEVELOPMENT KIT-RESEARCH



AUTOKIT-RESEARCH





## RESEARCH VR

ClassVR is a versatile platform using the power of Virtual and Augmented Reality for education and training from the classroom to the boardroom. ClassVR offers a student-friendly interface, gesture controls, embedded educational resources and simple-to-use teacher controls.

—● Please contact us for pricing

Main Features: Virtual Reality for Developers

Mobile/ Stationary: Stationary

Training: No training required but available as an option.

Warranty: 1-year warranty



VR DEVELOPER AND RESEARCH PACK





# RobotLAB Coding Lab

We brought into one turnkey solution what we consider to be the best technologies to teach STEM and Coding for Colleges.

This bundle includes everything you need to make your program successful!

Discover our complete turnkey solutions that enable educators and students to make the most productive and efficient use of the robots in the classroom. From equipment to software and curriculum, everything you need to make your program successful is included in a practical mobile charging cart.



ROBOTLAB COLLEGE STEMLAB

—● Please contact us for pricing

- 1 NAO robot AI edition
- 2 Misty robots
- 1 Niryo Ned (Conveyor Belt/Vision Set)
- Accessories
- 1 Teacher laptop preloaded with software
- 1 WiFi router
- 3-hour online
- 1-year warranty and RobotLAB support





## SPECIAL EDUCATION



### NAO ROBOT



NAO robot and WOZ Software is an easy-to-use, highly customizable framework for providing therapeutic activities and academic content to special needs students. Even with no prior knowledge in software or robotics, the interface enables users to easily take control of the robot and send commands to the robot easily and at any time.

—● Please contact us for pricing



### MISTY ROBOT



Misty and WOZ software facilitates robot-assisted instruction by delivering life skills, daily living, learning readiness and academic content to children and adults with autism spectrum disorder (ASD) and other special needs. Studies have shown that children with ASD consider robots, such as Misty, as peers or social entities enabling students to be taught and learn quickly and more effectively.

—● Please contact us for pricing



## QT ROBOT

Students with autism often have a high interest in technology and usually feel comfortable working with computers because of their rule-based and predictable nature.

QRobot as an embodied technology stands somewhere between a computer and a social being. It offers various benefits of technology such as consistency, simplicity and predictability, but it also has a character providing an engaging environment for social learning.



● Please contact us for pricing



## KEBBI ROBOT

Kebbi is an Educational Robot that integrates artificial intelligence, software and hardware technology with a variety of facial expressions, body movements, and communicative interactions. Kebbi has simplistic features and a compact size making it easy to interact with students through personalized lessons delivering a unique set of capabilities that work very well for the home or school environment. The interactive capabilities provide users with a fun, heartwarming educational experience.

● Please contact us for pricing







## DREMEL

Implement 3D printing in the classroom with the new Dremel Digilab 3D45 printer that offers high performance and includes everything you need for your maker space. Create your own maker space with the state-of-the-art product and teach your students how to solve open-ended problems by creating their own models and prototypes.

Main Features: Ability to create models and prototypes.

Mobile / Stationary: Stationary Robot Training: No training required, available as an option

Warranty: 1-year warranty

—● Please contact us for pricing



DREMEL DIGILAB  
3D45 EDU 3D



DREMEL 3D PRINTER  
3D40 EDU PRINTER



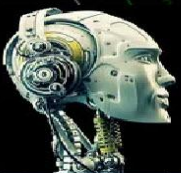
DREMEL DIGILAB  
LASER CUTTER



PLA FILAMENT  
10-PACK

## ACCESORIES

**McZeal Robotics**







# PEEL 3D

Main Features:

3D scanner

Mobile/Stationary:

Stationary Robot

Training: No training required, available as an option

Warranty: 1-year warranty

Peel 3D is an affordable professional-grade handheld 3D scanner with great accuracy. It lets you make high-quality 3D scans of small or large objects while keeping your project on a budget.

**Create your own maker space with the state-of-the-art product and teach your students how to solve open-ended problems by creating their own models and prototypes.**



PEEL 2 -3D SCANNER



PEEL 2 CAD-3D

—● Please contact us for pricing

# THANK YOU

If you are interested in a specific product and want to learn more, please go to [www.RobotLAB.com/higher-ed-robots](http://www.RobotLAB.com/higher-ed-robots) You'll be able to get more details about each product such as educational benefits, specifications, what's in the box, options available, etc. You can also reach to us directly by email at [Sales@alrobots.com](mailto:Sales@alrobots.com) or by phone **+1 (832)930 3777**

our team of experts will be delighted to help you choose the right solution for you!

From the entire RobotLAB team, Thank you!

For price quote requests, please email [Sales@ALRobots.com](mailto:Sales@ALRobots.com) send your Purchase Orders to [PO@ALRobots.com](mailto:PO@ALRobots.com)

[www.ALRobots.com](http://www.ALRobots.com)

